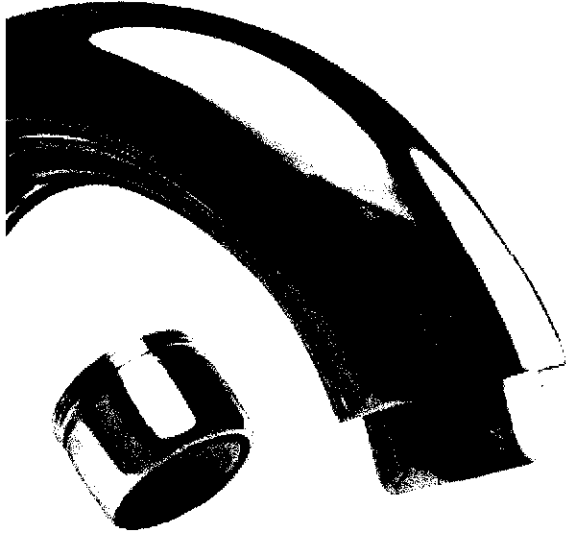


Dual-Thread Aerators

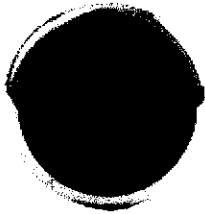
N3100, N3104, N3205, N3210

FEATURES AND BENEFITS



Connects with
Most Faucets

Needle Spray Model#
18 individual streams with
the perfect amount of
pressure



Bubble Spray Model
Air-induced providing a full
stream of bubble spray while
using less water



Finishes & Flow Rates

	0.5 GPM	1.0 GPM	1.5 GPM	2.2 GPM
Bubble		N3210 SAW	N3104-1.5	N3100T-2.2 N3100-2.2
Needle	N3205N	N3210N		

Water Savings

- Choose 0.5, 1.0, 1.5 or 2.2 GPM Water-Saving Flow Rates, Needle Spray or Bubble Spray
- 1.0 GPM saves 55% over standard faucets*
- Dual-thread brass connection, Male: 15/16-27, Female: 55/64-27
- Housing constructed of solid, low-lead brass with high-polished chrome finish
- Installs easily without tools
- Stylish, modern fits most faucets, works well in both kitchens and baths
- Limited lifetime warranty**

POTENTIAL SAVINGS*

	Water (Gallons)	Electric (kWh)	Gas (therms)	Dollars
Water Savings	3,285			\$26
Energy Savings with Electric Water Heater		482		\$64
Energy Savings with Gas Water Heater			16	\$16

*Factors in calculating savings potential:

- 3-person households each using a bathroom faucet 2.5 minutes per day, 365 days per year
- Comparing water use with this 1.0 GPM aerator vs. a standard 2.2 GPM unit
- Water and sewer cost of \$6 per 1,000 gallons
- 8.34 BTUs to raise the temperature of 1 gallon 1°
- 500.4 BTUs to raise the temperature of 1 gallon 60° (i.e. 60° to 110° F)
- 1 million BTUs = 293 kWh
- Average cost of electricity \$0.133 per kWh (Bureau of Labor Statistics Sept 2012)
- Average cost of gas \$0.953 per therm (Bureau of Labor Statistics Sept 2012)

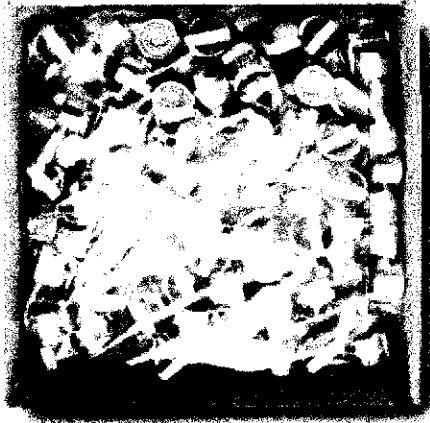
Corporate HQ

4200 Diplomacy Road
Fort Worth, TX 76155 USA
Toll Free: 800.831.8383
Phone: 817.391.0800 Fax: 817.391.0801
Email: info@nccgreen.com

Dual-Thread Aerators

N3100, N3104, N3205, N3210

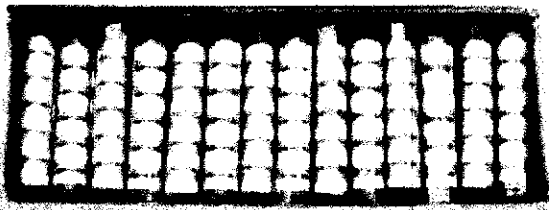
Bulk Packaging:
Plastic Bulk Bag



BULK PACKAGING

Item No	N3100, N3104-1.5, N3205N, N3210N, N3210 SAW	
UPC Code	N3100T-2.2: None	2.2 GPM Bubble
	N3100-2.2: None	2.2 GPM Bubble
	N3104-1.5: 732291310413	1.5 GPM Bubble
	N3210N: 732291321013	1.0 GPM Needle
	N3210 SAW: 732291321020	1.0 GPM Bubble
	N3205N: 732291320511	0.5 GPM Needle
Type of Packaging	Kraft Corrugated	
Pack Quantities	Plastic Bulk Bag - 500 6-Pack Plastic Tubes - 504	
Dimensions of Master	Plastic Bulk Bag - Width 8.75" Height 8" Depth 8.5" 6-Pack Plastic Tubes - Width 5.5" Height 16.125" Depth 6.875"	
Weight of Master	15 lbs	

Bulk Packaging:
6-Pack Plastic Tubes (N3100T-2.2)

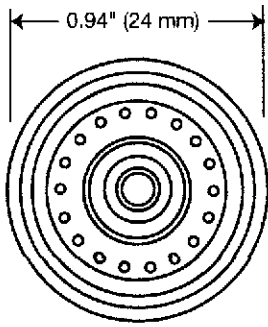
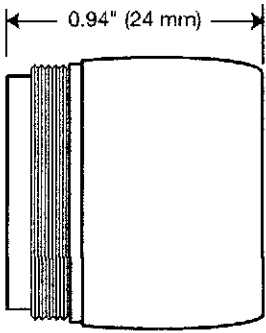


Corporate HQ

4200 Diplomacy Road
Fort Worth, TX 76155 USA
Toll Free: 800.831.8383
Phone: 817.391.0800 Fax: 817.391.0801
Email: info@nccgreen.com

Dual-Thread Aerators

N3100, N3104, N3205, N3210



*Dimensions are subject to change

Overall Dimensions	Diameter 0.94" Length 0.94"
Materials	Chrome plated parts meets ASTM B368 for corrosion testing
Threads	Dual-thread system accommodating both male and female applications, with 15/16" x 27 threads inside and 55/64" x 27 threads outside
Certifications	Meets or exceeds: ASME A112.18.1 / CSA B125.1; ANSI/NSF 61 N3104-1.5 is WaterSense Labeled - Max. Flow Rate: 1.5 GPM

Perlator®

Faucet Aerator - 1.5 gpm

Flow Restricted Junior Size



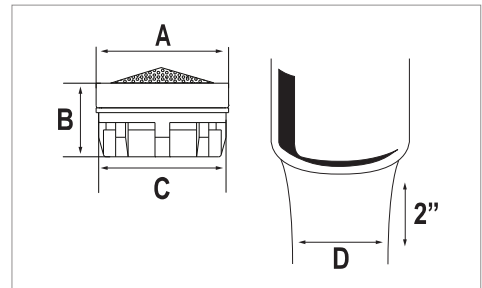
flow, stop and go®

Features and Benefits

- ▶ Watercolours® design: Color coding to identify flow rate and stream pattern.
- ▶ Patented construction provides a splash-free stream, well aerated and soft to the touch.
- ▶ Integrated anti-liming Honeycomb replaces conventional wire mesh screens prone to lime build up.
- ▶ Anti-clogging dome screen filters sediment and particles.
- ▶ Available housing finishes: chrome, polished brass and brushed nickel.
- ▶ Roll marked with statutory marks or laser for vandal proof housings.

Certifications

ANSI/NSF 61
 Meets ASME A112.18.1M and CSA B125 requirements
 Meets **CALGreen** requirements
 WaterSense



Thread & Part Number

Part #	Designation	Thread Size
10 665	Insert only	
10 670	Junior male	13/16"-27
10 680	Junior female	3/4"-27
10 674	Vandal proof junior male	13/16"-27
10 684	Vandal proof junior female	3/4"-27

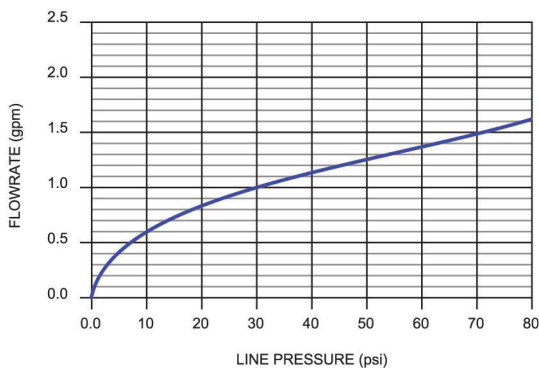
Packaging:

Inserts 1pc (bag), 6pcs (tube), 50pcs (bag)
 Jr. male/female 1pc (bag), 6pcs (tube), 50pcs (tray)
 Jr. vandal proof male/female 1pc (bag), 6pcs (tube), 50pcs (tray)
 other product combinations available

Color Code

Dome	Ring	Basket
Green	Green	Dark Gray

Flow Rate Curve



Dimensions

No	mm	In
A	18.20	.717
B	10.21	.402
C	17.4	.685
D	≈ 11	≈ 7/16

Housings



Technical Data

Materials: Body Acetal
 Washer EPDM
 Wetted surface area: 3869.14 mm²

Continuous		Short-term (5 minutes max.)	
max. 50 °C	max. 120 °F	max. 70 °C	max. 160 °F
90 psi max.	6 bar max.	125 psi max.	8.5 bar max.